



INDOFINE Chemical Company, Inc.

121 Stryker Lane, Bldg. 30, Suite 1 • Hillsborough, NJ 08844 • U.S.A.

Phone: (908) 359-6778 • FAX: (908) 359-1179

website: www.indofinechemical.com

e-mail: chemical@indofinechemical.com

CERTIFICATE OF ANALYSIS

Catalog Number: 06-1389

Product Name: **4-HYDROXY-4'-METHOXYTOLAN**
(4-((4'-Methoxyphenyl)ethynyl)phenol)

CAS Number: [18938-18-6]

Lot Number: 1603748

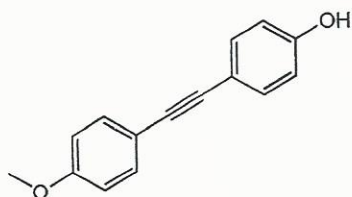
Chemical Formula: C₁₅H₁₂O₂

Molecular Weight: 224.25

Appearance: Yellowish powder

Storage: Store in a cool, dry place

Purity: 98.19%





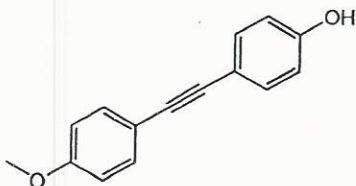
INDOFINE Chemical Company, Inc.

121 Stryker Lane, Bldg. 30, Suite 1 • Hillsborough, NJ 08844 • U.S.A.

Phone: (908) 359-6778 • FAX: (908) 359-1179

website: www.indofinechemical.com

e-mail: chemical@indofinechemical.com

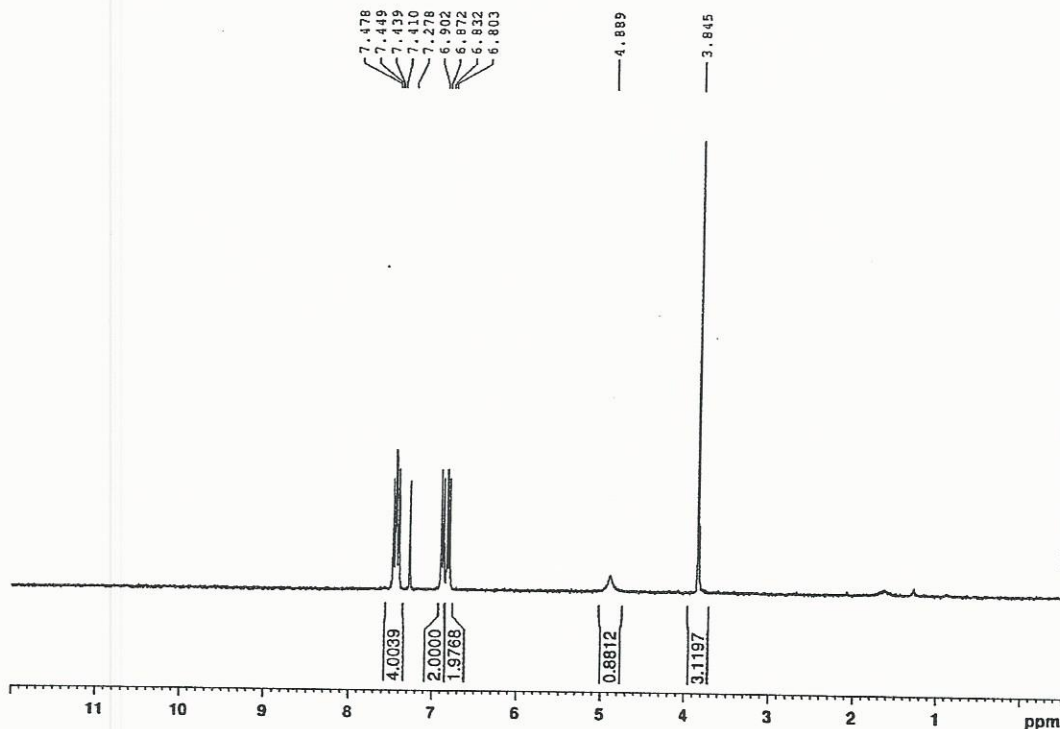


Catalog No.: 06-1389

Product Name: 4-Hydroxy-4'-methoxytolan

(4-((4'-Methoxyphenyl)ethynyl)phenol)

Lot No.: 1603748



```

EXPNO          10
PROCNO         1

F2 - Acquisition Parameters
Date_          20160311
Time          17.03
INSTRUM       FOURIER300
PROBHD        5 mm DUL 13C-1
PULPROG       zg30
TD            65536
SOLVENT       CDCl3
NS            14
DS            2
SWH           6103.516 Hz
FIDRES        0.093132 Hz
AQ            5.3687091 sec
RG            194.181
DW            81.920 usec
DE            6.50 usec
TE            294.6 K
D1            1.00000000 sec
TDO           1

===== CHANNEL f1 =====
SFO1          300.1818537 MHz
NUC1           1H
P1            12.40 usec
PLW1          10.00000000 W

F2 - Processing parameters
SI            65536
SF            300.1800000 MHz
WDW           EM
SSB           0
LB            0.30 Hz
GB            0
CB            0
PC            1.00

```



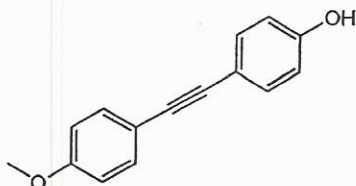
INDOFINE Chemical Company, Inc.

121 Stryker Lane, Bldg. 30, Suite 1 • Hillsborough, NJ 08844 • U.S.A.

Phone: (908) 359-6778 • FAX: (908) 359-1179

website: www.indofinechemical.com

e-mail: chemical@indofinechemical.com



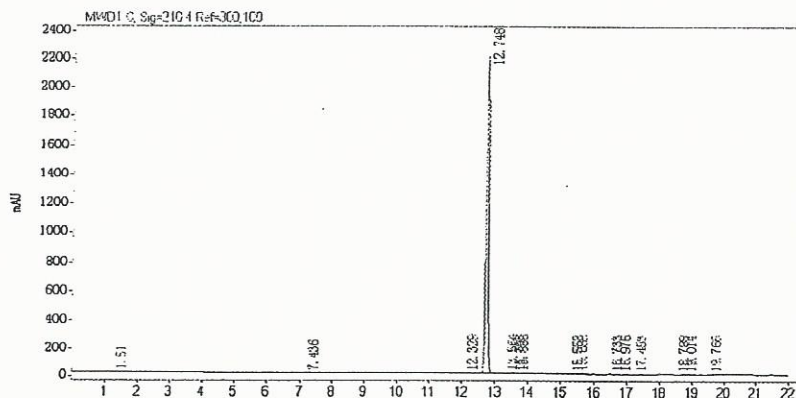
Catalog No.: 06-1389

Product Name: 4-Hydroxy-4'-methoxytolan

(4-((4'-Methoxyphenyl)ethynyl)phenol)

Lot No.: 1603748

sample position 13
 acquisition date 2016/3/11 13:02:28 method 10-90 15MIN 1.M
 inject volume 1.000
 data file C:\CHEM32\1\DATA\160311\DEF_LC



signal: MWD1 C, Sig=210,4 Ref=360,100

retention time (min)	pattern	peak width	area	height	area%	name
1.510	VV R	0.0649	7.5198	1.7240	0.0651	
7.436	VB	0.0778	1.6235	0.3066	0.0141	
12.329	BB	0.0638	8.7797	2.2343	0.0760	
12.748	BBA	0.0803	11359.7607	2199.6396	98.3512	
13.564	BB	0.0883	28.1327	4.9520	0.2436	
13.793	BV	0.0707	3.3507	0.7415	0.0290	
13.888	VBA	0.0660	3.0102	0.7020	0.0261	
15.552	BV	0.0834	26.0726	4.6544	0.2257	
15.682	VB	0.0836	28.6185	5.2508	0.2478	
16.733	BB	0.0752	10.0346	2.1192	0.0869	
16.976	BBA	0.0769	15.6763	3.1039	0.1357	
17.453	BB	0.0813	11.0485	2.1012	0.0957	
18.788	BV	0.1278	2.3470	0.2799	0.0203	
19.014	VB	0.1244	2.7812	0.3438	0.0241	
19.766	BB	0.1280	41.4388	4.8350	0.3588	

11550.1949



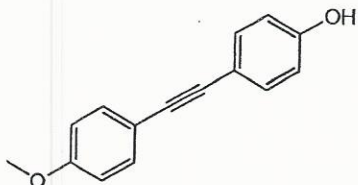
INDOFINE Chemical Company, Inc.

121 Stryker Lane, Bldg. 30, Suite 1 • Hillsborough, NJ 08844 • U.S.A.

Phone: (908) 359-6778 • FAX: (908) 359-1179

website: www.indofinechemical.com

e-mail: chemical@indofinechemical.com

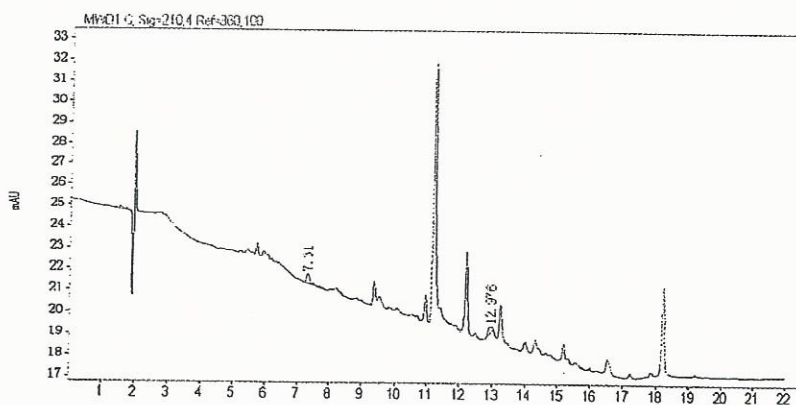


Catalog No.: 06-1389

Product Name: 4-Hydroxy-4'-methoxytolan
(4-((4'-Methoxyphenyl)ethynyl)phenol)

Lot No.: 1603748

sample position	I	sample name	blank
acquisition date	2016/3/11 8:19:08	method	10-90 15MIN 1.M
inject volume	1.000	data name	blank
data file	C:\CHEM32\1\DATA\160311\DEF_LC		



retention time min	partle	peak width	area	height	area%	name
7.310	BB	0.1552	4.6976	0.4521	65.4983	
12.976	BBA	0.1770	2.4745	0.2331	34.5017	
			7.1721			